

A Division of ReadyLIFT Suspension Inc.

**IF YOUR ReadyLIFT Off Road Suspension
PRODUCT IS MISSING A PART
or HAS A DAMAGED PART, PLEASE
CONTACT CUSTOMER SERVICE DIRECTLY.**

A NEW REPLACEMENT PART WILL BE SENT TO YOU IMMEDIATELY

(800)549-4620

MON-FRI 7AM-5PM PST

or

EMAIL: INFO@ReadyLIFT.COM

WEBSITE: ReadyLIFT.COM

****Please retain this document in your vehicle at all times****

ReadyLIFT Off Road Suspension Limited Warranty

Limited Warranty details for ReadyLIFT Off Road Suspension control arms and steering kits

The ReadyLIFT Off Road Suspension Limited Lifetime Warranty covers defective materials or defective workmanship for the life of the product to the original purchaser and only on the original vehicle which the product was installed. The ReadyLIFT Off Road Suspension Limited Lifetime Warranty excludes the following wearable items: bushings, bushing sleeves, bump stops, top-out stops, spherical bearings (uniballs), heim joints (rod ends), and misalignment spacers (upper control arm and steering). These items are considered wear items and are covered for 90 days from the original purchase date, therefore these items will not be considered defective because of wear. Wear is subject to use of product, use of vehicle, driving conditions, weather conditions, cleanliness of product/components, and maintenance/up-keep. The degree of wear and overall lifetime of each wear item is subject to afore mentioned conditions and circumstances. ReadyLIFT Off Road Suspension will only warranty wear items in the case of workmanship and defects for the period of 90 days following the date of purchase. Please note that all products should be inspected by a professional technician before installing any part/kit onto the vehicle. In addition, all products should be installed by a qualified technician. Please contact ReadyLIFT Off Road Suspension if there is any question as to the quality of workmanship of each component or its installation procedure. Contact ReadyLIFT Off Road Suspension directly about any potentially defective parts prior to removing any parts from the vehicle. If it appears that the part is warrantable, you will be given an RGA number and asked to return the part freight prepaid. If the part is found to be warrantable, at the sole discretion of ReadyLIFT Off Road Suspension, it will be repaired or replaced and returned to you. **The limited warranty expressed by ReadyLIFT Off Road Suspension supersedes that of any claims made by authorized and unauthorized dealers of ReadyLIFT Off Road Suspension products.**

www.ReadyLIFT.com

Please read Instructions thoroughly and completely before beginning installation.
Installation by a certified mechanic is recommended.

ReadyLIFT Off Road Suspension Inc. is **NOT** responsible for any damage or failure resulting from improper installation.

Safety Warning: Suspension systems or components that enhance the on and off-road performance of your vehicle may cause it to handle differently than it did from the factory. Extreme care must be used to prevent loss of control or vehicle rollover during abrupt maneuvers. Always operate your vehicle at reduced speeds to ensure your ability to control your vehicle under all driving conditions. Failure to drive safely may result in serious injury or death to driver and passengers. Driver and passengers must ALWAYS wear your seat belts, avoid quick sharp turns and other sudden maneuvers. ReadyLIFT Off Road Suspension does not recommend the combined use of suspension lifts, body lifts, or other lifting devices. You should never operate your vehicle under the influence of alcohol or drugs. Constant maintenance is required to keep your vehicle safe. Thoroughly inspect your vehicle before and after every off-road use.

Installation Warning: All steps and procedures described in these instructions were performed while the vehicle was properly supported on a two post vehicle lift with safety jacks. Use caution during all disassembly and assembly steps to insure suspension components are not over extended causing damage to any vehicle components and parts included in this kit. Included instructions are guidelines only for recommended procedures and are not meant to be definitive. Installer is responsible to insure a safe and controllable vehicle after performing modifications.

ReadyLIFT Off Road Suspension recommends the use of an OE Service Manual for model/year of vehicle when disassembly and assembly of factory and related components. Unless otherwise specified, tighten all bolts and fasteners to standard torque specifications listed within the OE Service Manual, or as referenced in the torque specification list provided in these instructions.

Suspension components that use rubber or urethane bushings should be tightened with the vehicle at normal ride height. This will prevent premature wear or failure of the bushing and maintain ride comfort. Larger tire and wheel combinations may increase leverage on suspension, steering, and related components. Due to payload options and initial ride height variances, the amount of lift is a base figure. Final ride height dimensions may vary in accordance to original vehicle ride height. Always measure the vehicle ride height prior to beginning installation.

Vehicle ride height chart

**Driver Front:
Stock height**

Lift installed

**Driver Rear:
Stock height**

Lift installed

**Pass. Front:
Stock height**

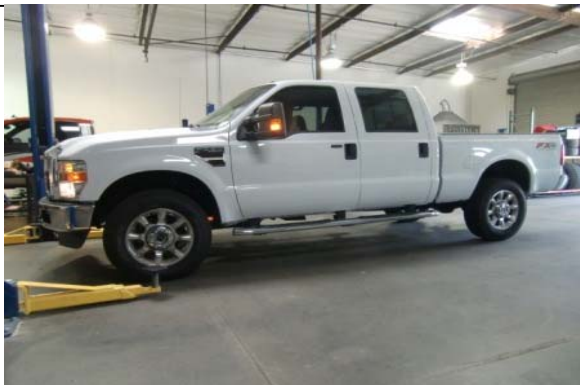
Lift installed

**Pass. Rear:
Stock height**

Lift installed

Bolt Size Millimeters	Torque Specs in FT/LB		Bolt Size SAE	Torque Specs in FT/LB	
	Metric Grade 8.8	Metric Grade 10.9		Grade 5	Grade 8
6mm	6	8	5/16	15	20
8mm	16	22	3/8	30	35
10mm	40	45	7/16	45	60
12mm	54	70	1/2	65	90
14mm	89	117	9/16	95	130
16mm	132	175	5/8	135	175
18mm	182	236	3/4	185	280

Installation Instructions (46-2440 & 46-2442)



Place vehicle on level ground and measure ride height.



Remove upper track bar hardware and disconnect at frame.



Lift front of vehicle and support with min. 3 ton jack stands.



Remove front wheels and tires.



(05-07) models remove brake line brackets at the frame



Install drop bracket and attach to frame with OE hardware.



(08-10) models require drilling new 3/8 hole below OE hole.



Shown, pass. side new 3/8 brake line hole location.

Installation Instructions (46-2440 & 46-2442)



Shown, dr. side new 3/8 brake line hole location.



(11-up) models replace OE bracket with new drop bracket.



Loosen hard line ferrule rotate block 180 degrees and tighten



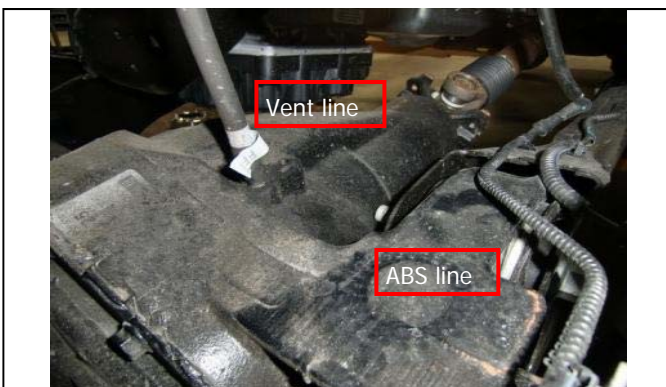
Note line direction, replace OE bracket with new drop bracket



Reinstall block into bracket with retaining clip.



Support front axle with floor jack(s).



Note differential vent line and ABS brake lines.



Disconnect both front sway bar end links

Installation Instructions (46-2440 & 46-2442)



(11-up) Disconnect sway bar at frame and lower



Install provided drop brackets to frame with OE hardware.



Raise sway bar and attach with new hardware.



Remove front shocks. **Note: Longer shocks required**



Carefully lower front axle and remove front coil springs.



Raise vehicle enough to install new coil springs w/OE isolator



Raise axle and clock coil spring on lower mount as shown .



Install and tighten new shock kit **99-2095F**

Installation Instructions (46-2440 & 46-2442)



Lower vehicle, reconnect sway bar end links



Reconnect track bar to new drop bracket w/ OE hardware.



Straighten steering wheel steps, Unlock steering wheel



Remove safety keeper bolt and slide bracket out of collar



Loosen (2) collar bolts and lube threads of steering linkage



Adjust collar to straighten steering wheel



Tighten up hardware and replace keeper bolt



Shown '11 F-450 4WD Dually

Final Checks & Adjustments

Post Installation Warnings: Once the vehicle is lowered to the ground, check all parts which have rubber or urethane components to insure proper torque. Torque wheels to factory specs. Move vehicle backwards and forwards a short distance to allow suspension components to adjust. Turn the front wheels completely left then right and verify adequate tire, wheel, brake line, and ABS wire clearance. Test and inspect steering, brake and suspension components for tightness and proper operation. Inspect brakes hoses and ABS lines for adequate slack at full extension. Failure to perform the post inspection checks may result in vehicle component damage and/or personal injury or death to driver and/or passengers. Test drive vehicle and re-check the torque of all fasteners and re-torque wheels on vehicle. Re-adjust headlamps.

Vehicle Handling Warning: Vehicles with larger tires and wheels will handle differently than stock vehicles. Take time to familiarize yourself with the handling of your vehicle.

Wheel Alignment Special Note/Headlamp Adjustment:

It is necessary to have a professional wheel alignment performed by a certified alignment technician. Align the vehicle to OE specifications. (Please note the following caster specs; dr 1.7, pass 2.2). This spec is critical in order to ensure proper suspension and steering geometry. It is recommended that your vehicle alignment be checked after any off-road driving. In addition to your vehicle alignment, for your safety and others, it is necessary to check and adjust your vehicle headlamps for proper aim and alignment

Vehicle Re-Torque and Safety Inspection:

Upon completion of all services and adjustments performed on your vehicle, and within 50 miles of driving, check to ensure all fasteners and hardware are properly torqued to specification as noted in the vehicles factory service manual or the torque chart included.

WWW.ReadyLIFT.com

ReadyLIFT Suspension Inc.

7490 Commercial Way

Henderson, NV 89011

Phone: (702)410-2300

Fax: (702)410-2794

Toll Free: (800)549-4620

Email: Info@ReadyLIFT.com